



The Blue Badge scheme: rights and responsibilities in England

Please read this leaflet before using the badge and keep it in case you need to refer to it in future.



This leaflet is available in Braille, audio tape and CD formats. You can order copies by telephoning: 0300 123 1102.

**Record useful information here
so that it is always to hand**

Badge serial number

**Issued by
(name of your
local authority)**

**Issuing office
address**

**Issuing office
telephone number**

Badge expiry date

Contents

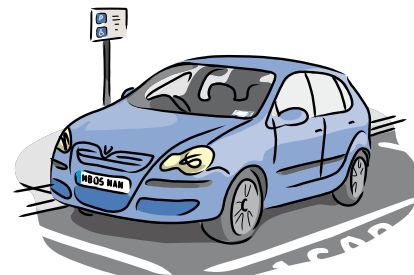
	Page
The Blue Badge scheme	6
1. Your responsibilities as a Blue Badge holder	7
Who can use the badge	8
How to display the badge	9
When you need to use a parking clock	10
Power to inspect the badge	11
Renewing the badge	11
Returning the badge	11
Drivers who hold a Blue Badge	12
Further advice and information	13

2. Where can I park?	14
Where you can park	15
Places you need to check before parking	17
Places where you cannot park	20
Safe and responsible parking	21
3. Travelling in London	24
Travelling in Central London	25
Central London Congestion Charging Scheme	28
4. Travelling abroad	29
5. Toll concessions for Blue Badge holders	31

The Blue Badge scheme

A Blue Badge will help you to park close to your destination, either as a passenger or driver. However, the badge is intended for on-street parking only. Off-street car parks, such as those provided in local authority, hospital or supermarket car parks are governed by separate rules. This leaflet will provide you with more information about where you can and cannot park in the on-street environment.

Please note that when travelling outside England, but within the UK, the concessions may not always be the same. Please check with the relevant authority in Scotland, Wales or Northern Ireland.



How do I use the Blue Badge properly ?



You must never give the badge to friends or family to allow them to have the benefit of the parking concessions.

You must never copy the badge or attempt to alter the details.

The badge remains the property of the issuing local authority. They can ask for the badge to be returned if it is being misused.

1 Your responsibilities as a Blue Badge holder

It is down to you to use the Blue Badge properly. The badge and its concessions are for your use only. It is a criminal offence for you or anyone else to misuse the badge, and doing so could lead to a £1,000 fine. Making sure that the scheme is not abused will benefit genuine badge holders, such as yourself.

If you are using the parking concessions as a passenger, it is your responsibility to make sure that the driver is aware of all the rules set out in this leaflet.

Who can use the badge?

The badge is for your use and benefit only. It must only be displayed if you are travelling in the vehicle as a driver or passenger, or if someone is collecting you or dropping you off and needs to park at the place where you are being collected or dropped.

Do not allow other people to use the badge to do something on your behalf, such as shopping or collecting something for you, unless you are travelling with them.

- You must never give the badge to friends or family to allow them to park for free, even if they are visiting you.
- **You should not use the badge to allow non-disabled people to take advantage of the benefits while you sit in the car.** Although it is not illegal for a badge holder, or a non-disabled person waiting for the badge holder to return, to remain in the vehicle while the Blue Badge is displayed, consideration should be given to using a car park whenever possible.



- It is a criminal offence to misuse a badge. This includes people other than the badge holder taking advantage of the parking concessions provided under the scheme.

How to display the badge

When using the parking concessions **you must display the badge** on the dashboard or facia panel, where it can be clearly read through the front windscreen. If there is no dashboard or facia panel in your vehicle, you must still display the badge in a place where it can be clearly read from outside the

vehicle. The front of the badge should face upwards, showing the wheelchair symbol. **The side showing the photograph should not be visible through the windscreen.**

You must also ensure that the details on the front of the badge remain legible. If they become unreadable through fading or wear and tear, you must return the badge to your local authority so they can issue you with a new one. Displaying a badge that is illegible may result in a parking fine.



Blue parking clock



Blind people need to ensure that people displaying the badge or clock on their behalf understand how to display them correctly.

Incorrect display of the badge may result in a parking fine.

When you need to use a parking clock

When you park on yellow lines or in other places where there is a time restriction, you need to display the blue parking clock to show your time of arrival. The clock should be sent to you together with the Blue Badge.

If not, you can get a clock from the same authority that issued the badge.

If you need to use a parking clock, you must display it on the vehicle's dashboard or facia panel, so that the time can be seen clearly through the front windscreen. The clock should be set to show the quarter hour period during which you arrived. If there is no dashboard or facia panel in your vehicle, you must still display the clock in a place where it can be clearly read from outside the vehicle.

Power to inspect the badge

Police officers, traffic wardens, parking attendants and civil enforcement officers have the power to inspect the badge.

These people should produce an identity card with their photograph on it to prove they are who they say they are. If any of these people ask to see the badge, you must show it to them. If you do not, you will be breaking the law and you could be fined up to £1,000.

Renewing the badge

You should apply for a new badge from your local authority some weeks before it runs out. Not all local authorities send out reminders. **Do not use the badge if it has expired or you may be fined.**

Returning the badge

You must return the badge securely to your local authority if

- the badge has expired;
- your medical condition or mobility improves and you are no longer eligible;

- a replacement badge has been issued for one that is lost or stolen and the original is found/recovered (then the original badge must be returned);
- the badge becomes damaged or faded and is illegible;
- the badge is no longer required, for example should you be confined to the house.

Please also note that the badge should be returned to the issuing authority on the death of the badge holder.

If you continue to display the badge when you no longer need it you may be fined up to £1,000.

Drivers who hold a Blue Badge

If you are a driver and your disability is likely to affect your ability to drive (even if your car is adapted), the law says you must tell the Driver and Vehicle Licensing Agency (DVLA). You can write to them at DVLA, Swansea SA99 1TU, or phone **0300 790 6806** or you can email them at **drivers.dvla@gtnet.gov.uk**. Their website address is **www.dvla.gov.uk**

Holding a Blue Badge does not in itself mean that you do not have to pay road tax, but you may be exempt if you meet certain other criteria



set by the DVLA. For more information on the criteria for road tax exemption, contact the DVLA on **0300 790 6802** or pick up their booklet **V188** which is available from DVLA offices (see **www.direct.gov.uk/motoring** for details).

Further advice and information

You should always tell your local authority if your circumstances change, such as when

- the badge needs to be renewed;
- the badge is lost, stolen or damaged;

- you change address;
- your surname changes due to marriage.

The Blue Badge scheme is administered and enforced by your local authority and you should always contact them first for further information. The following link can help you find your local council – **www.direct.gov.uk/en/D11/Directories/Localcouncils/AToZOfLocalCouncils/index.htm**

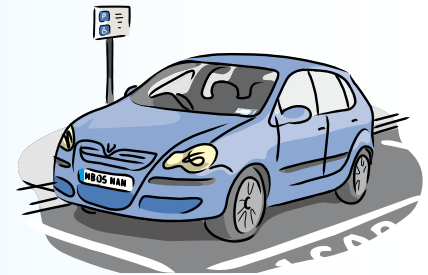
However, if your query relates to national policy on the scheme, please email the Department for Transport at **blue.badge@dft.gsi.gov.uk**

2

Where can I park?

If you do not drive yourself, it is important that you share this information with anyone who will be carrying you as a passenger.

What are the rules?



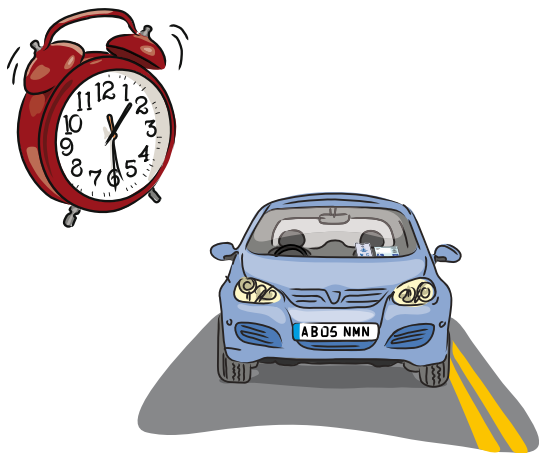
Where you can park

The following table lists the parking concessions available to you as a Blue Badge

holder. However, you must always check signs to see what the rules are when parking.

Place

Yellow lines



Conditions

Badge holders may park on single or double yellow lines for up to three hours but in general not where there are restrictions on loading or unloading – indicated by yellow kerb dashes and/or signs on plates. (You may wish to check whether a particular local authority has chosen to exempt Blue Badge holders from this restriction.) Where local schemes apply, such as those that apply in parts of central London (see page 25), you should check the rules for that area.

You are not entitled to park on yellow lines in off-street car parks.

You must display the Blue Badge and the blue parking clock showing the quarter hour period during which you arrived.

Continued on next page

Place

Yellow lines

Conditions

Continued from previous page

You must wait for at least one hour after a previous period of parking before you can park the same vehicle in the same road or part of a road on the same day.

'On-street' parking meters and pay-and-display machines

Badge holders may park for free and for as long as they need to.

You must display the Blue Badge.

'On-street' disabled parking bays
(Signs have a blue wheelchair symbol)

You may park free and without time limit unless signs say otherwise (check local signs for information).

You must display the Blue Badge.

Always try to use these bays instead of parking on yellow lines.

Places you need to check before parking

There are a number of restrictions and local parking schemes which you need to be aware of. Here is a list of those places and

the parking restrictions in force. If in doubt, ask the relevant authority before you travel.

Place

Off-street car parks (such as supermarket, hospital or local authority car parks)



Conditions

Off-street car park operators should provide parking spaces for disabled people. However, it is up to the car park owner to decide whether badge holders can park free of charge.

Do not assume you can always park for free.

Place**Conditions**

The London boroughs of Kensington & Chelsea, the City of Westminster, the City of London and part of the London Borough of Camden

Please see page 25 for further details.

Town centres where local schemes are in operation

Please check local signs for information.

On-street parking areas where all motorists can park for free but only for a limited time

Badge holders may park for as long as they wish unless signs say otherwise. Please check with signs before parking. If there is a time limit please display the blue parking clock which should be set to show the quarter hour period during which you arrived.

Road systems at airports

Contact the airport in advance to check the parking arrangements.

Place

Private roads

Red Routes (major roads in Greater London which are marked with a single or double red line)

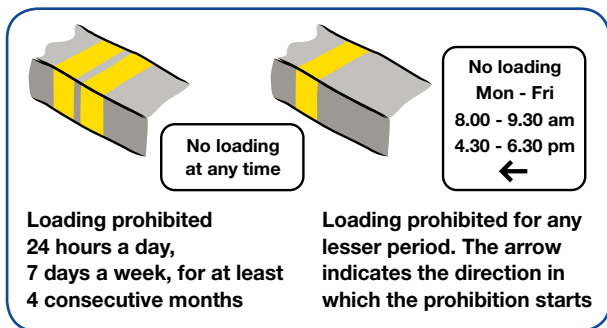
Please note there are a small number of red routes outside of London. Please contact the relevant local authority for advice on parking restrictions on these routes.

Conditions

Do not park unless you have permission from the owner(s).

Transport for London has general information on concessions for Blue Badge holders on roads that have priority (red) route controls.

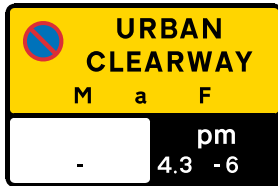
You can obtain this information by ringing them on **0845 305 1234** or by visiting their website at **www.tfl.gov.uk**



Places where you cannot park

The Blue Badge is not a licence to park anywhere. Like other road users, you must obey the rules of the road, as laid out in the Highway Code. Here is a list of places where you must not park.

- Places where a ban on loading or unloading is in force, as indicated above by kerb markings. (However you may wish to check whether a particular local authority has, exceptionally, chosen to allow Blue Badge holders to park where there are loading restrictions).
- Parking places reserved for specific users such as resident's bays or loading bays. (However you may wish to check whether a particular local authority has chosen to exempt Blue Badge holders from these restrictions).
- Pedestrian crossings (zebra, pelican, toucan and puffin crossings), including areas marked by zig-zag lines.
- Clearways (no stopping).
- A bus stop clearway during its hours of operation.



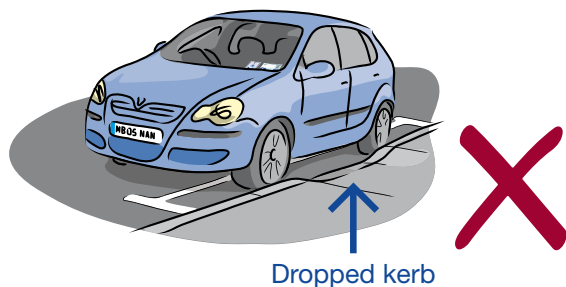
- An urban clearway within its hours of operation. You may pick up or drop off passengers. All parking is forbidden.
- School 'keep clear' markings during the hours shown on a yellow no-stopping plate.
- Bus, tram or cycle lanes or cycle tracks. Badge holders are not entitled to drive in bus lanes during their hours of operation.
- Where there are double white lines in the centre of the road (even if one of the lines is broken).
- Suspended meter bays or when use of the meter is not allowed.

- Where temporary parking restrictions are in force, as shown for example by no-waiting cones.

Safe and responsible parking

Do **not** park where it would endanger, inconvenience or obstruct pedestrians or other road users. Examples of dangerous or obstructive parking include the following, although there are others:

- school entrances, bus stops, on a bend, or near the brow of a hill or hump bridge;



- parking opposite or within 10 metres (32 feet) of a junction, except in an authorised parking space;
- where it would make the road narrow, such as by a traffic island or roadworks;
- where it would hold up traffic, such as in narrow stretches of road or blocking vehicle entrances;
- where emergency vehicles stop or go in and out, such as hospital entrances;
- where the kerb has been lowered or the road raised to help wheelchair users; and
- on a pavement, unless signs permit it.

The Blue Badge is not a licence to park anywhere. If you park where it would cause an obstruction or danger to other road users you could be fined or have your vehicle removed.

REMEMBER

If you do not drive yourself, you should share the information in this leaflet with the person who will be carrying you as a passenger.

You cannot legally be wheelclamped on the public highway ('on-street') for parking offences, provided you correctly display a

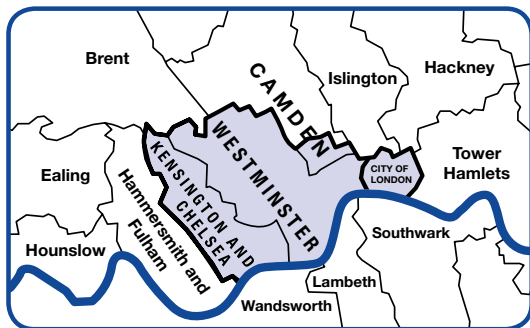
valid Blue Badge according to the rules of the scheme. Parking in forbidden areas or where it would endanger or obstruct other road users is an offence, which could result in you receiving a parking fine. You could also be prosecuted, have your car towed away and the badge withdrawn.

3

Travelling in London

The Blue Badge Scheme does not fully apply in certain parts of Central London. Please check the following information before travelling.

How do I
use the Blue
Badge when
travelling in
London ?



Travelling in Central London

The Blue Badge Scheme does not fully apply in four central London boroughs due to specific traffic management concerns that exist in these areas. These are the City of Westminster, the City of London, the Royal Borough of Kensington and Chelsea and part of the London Borough of Camden (see map above for boundaries).

These four boroughs offer their own individual parking concessions to disabled people who live or work in their areas. They do, however, provide a number of bays for Blue Badge holders. Information on where these bays are located can be found by contacting the relevant borough at its address on the next two pages or by viewing the following website **www.bluebadgelondon.org.uk**

If you are planning to visit one of these four Central London boroughs, you may wish to get more information about parking from them first. Please remember that things can change; if in doubt always check locally. Here are the addresses to write to:

City of London

Department of Technical Services,
PO Box 270,
Guildhall, London EC2P 2EJ
Tel: 020 7332 1548
email: parking.administration@cityoflondon.gov.uk
www.cityoflondon.gov.uk

Kensington & Chelsea

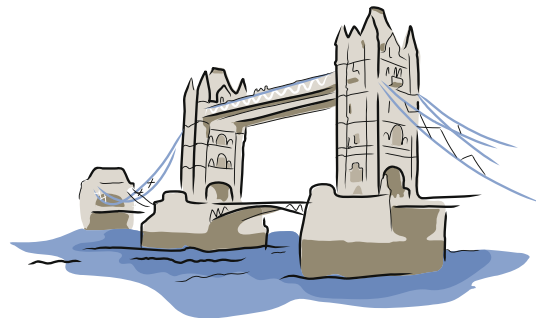
Parking Operations
The Annexe, Council Offices
Pembroke Road, London W8 6LZ
Tel: 020 7361 3004
email: parking@rbkc.gov.uk
www.rbkc.gov.uk

Camden

Passenger and Accessible
Transport Service Team
PO Box 64175, London WC1A 9BY
Tel: 0207 974 5919/6435
email: pats@camden.gov.uk
www.camden.gov.uk

Westminster

Permits Administration
PO Box 5744,
Dingwall IV15 9XB
Tel: 020 7641 5123
email: parkingpermits@westminster.gov.uk
www.westminster.gov.uk



Central London Congestion Charge Scheme

As a badge holder you do not have to pay the Congestion Charge.

To qualify for the 100% discount from the Charge, you must first register with Transport for London and pay a registration fee of £10. You need to apply at least 10 days before your journey.

You do not need to own or drive a vehicle to register for this concession. You can register

up to two vehicles that you normally use for travelling in Central London. You can get a registration form by writing to Congestion Charging, PO Box 4782, Worthing BN11 9PS, by visiting the Congestion Charge website at **www.cclondon.com**, or by calling their helpline on 0845 900 1234 (Textphone 020 7649 9123).

Further information for Blue Badge holders can be obtained from **www.tfl.gov.uk/assets/downloads/blue-badge-holders-guide.pdf**

Can I use the
Blue Badge
abroad ?

4 Travelling abroad

You can use your badge when travelling in the European Union but concessions do vary. If in doubt always check locally before travelling somewhere new.



Travelling abroad

The Blue Badge is recognised throughout the European Union (EU).

This means that you can take advantage of the parking concessions available in all other EU countries.

Please note that the concessions provided in other EU countries may not be the same as in the UK. You can download a full list of the EU concessions at **www.direct.gov.uk/en/DisabledPeople/MotoringAndTransport/Bluebadgescheme/DG_4001061**

As concessions in other EU countries may change over time, we advise you to check what concessions are available before travelling.

There are no current arrangements for you to use the badge outside the European Union, in countries such as the USA, Canada, Australia or New Zealand, although they may be prepared to recognise the Blue Badge. We advise you to check what concessions are available before travelling to non-EU countries.

Am I exempt
from payment
of tolls ?

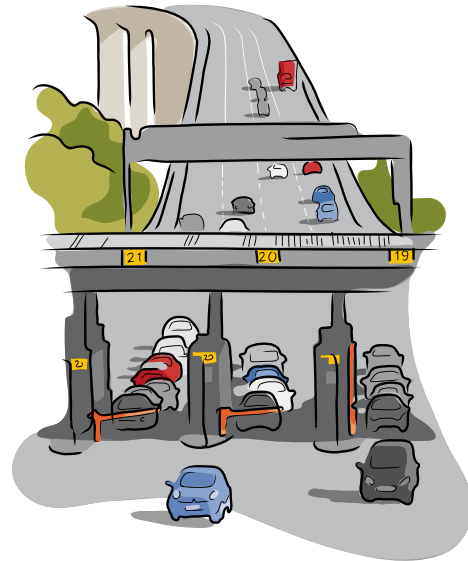
5 Toll concessions

Blue Badge holders may be exempt from payment of tolls at certain river crossings.

Toll concessions

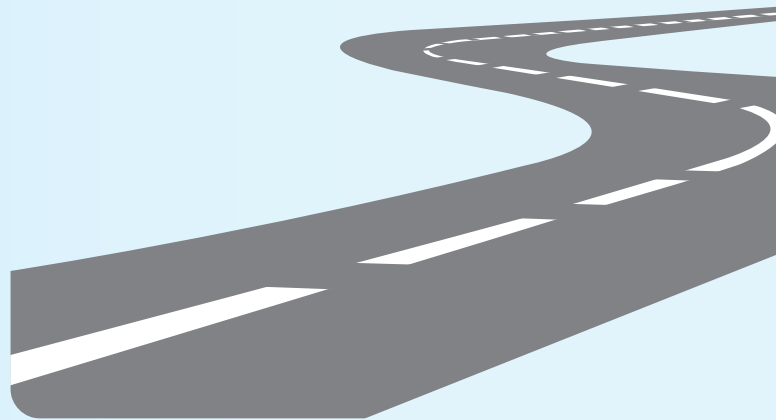
Blue Badge holders may be exempt from payment of tolls at certain river crossings.

Details on the concessions are available on the Directgov website at **www.direct.gov.uk/en/DisabledPeople/MotoringAndTransport/Bluebadgescheme/**



Copies of this leaflet can be downloaded
from the DfT website at **[www.dft.gov.uk/
transportforyou/access/bluebadge](http://www.dft.gov.uk/transportforyou/access/bluebadge)**

Produced by the
Department for Transport
Updated May 2011
© Crown Copyright 2007
Product Code T/INF/1214



Department for
Transport